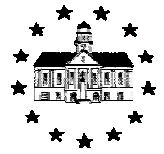


CCHA Newsletter



Volume 24 — Issue 3

Editor: R.T.Crowley - CROWLEY1948@GMAIL.COM

Third Quarter 2012

CCHA HISTORY PROGRAM REVEALS COURTHOUSE SECRETS PLANS FOR REBUILDING



A crowd of almost 90 people braved Chatham County's most wintry weather this season on 19 February to attend an engaging presentation by the architects in charge of the Chatham County Courthouse reconstruction. At the event, which was sponsored by the Chatham County Historical Association, Grimsley and Taylor Hobbs, of Hobbs Architects, described and illustrated with photographs how the deconstruction of the courthouse building has revealed some of changes made to the building over its more than 130 years. Layers of flooring have been removed to reveal original brick flooring in the main corridors and ghost lines suggest the locations of former staircases, vaults, and balconies. Fireplaces were exposed when layers of plaster were removed.

The Hobbsses noted recovered pine flooring from the old structure would be used in the first-floor museum exhibit room and to build the judges' bench and desktop. Recovered timbers will be milled locally to provide additional material for the reconstruction. Remnants of the original weathervane will be donated to the Association and an exact replica constructed for the building.

Grimsley Hobbs described how the building's original wooden interior construction was designed to collapse inward in the event of fire, sparing the masonry shell. Fortunately, that is exactly what hap-

pened in the March 2010 fire. Most of the structural elements of the building will be replaced with steel, making a catastrophic fire event less likely in the future.

Some of the original bricks had to be removed from the top of the building and interior walls to allow for the transition to steel construction. These bricks will be re-used in other areas of the reconstruction to avoid mixing old and new materials, which would destabilize the structure.

Brick will be used on the interior hallway floors and plaster will be used on the walls, to replicate the original construction. The building's exterior will be painted to highlight the trim, reproducing the paint scheme found in an early 1900s photo of the Courthouse.

Cleanup and rebuilding have been underway for several months now and are on schedule. The temporary roof having kept the structure dry since the fire will be removed in April of this year. The plan is to replace that roof section by section with new steel trusses. If all goes as planned, the building should be complete by December 2012.

COURTHOUSE PHOTOS AND INFO

If you would like to see courthouse photos and find more information, go to the Hobbs Architects blog:

<http://Blog.HobbsArchitects.com>

WE HAVE A TOWER!

As shown in the photo below, the new steel frame for the clock tower on the rebuilt courthouse is in the process of being erected as we go to press. Things are beginning to shape up very well!



ARCHITECT GRIMSLEY HOBBS INSPECTS



NEW MUSEUM NEARING REALITY

As the Courthouse rebuilding progresses, so does the building of the new museum progress! Each trip to Pittsboro gives a new glimpse of the work of bringing the courthouse back to its stately glory. The work of getting the museum created is not quite as visible and dramatic, yet.

The Historical Association had long dreamed of having a larger space for museum exhibits and displays and for research materials. For more than two decades the group had saved its funds toward that end. Out of our own funds we are able to dedicate nearly \$60,000. Our expected costs for the professional museum design, fabrication, installation, and contingencies are currently \$135,000. At the writing of this newsletter, community support has provided \$65,000. This community support has come from you, local businesses, financial institutions, civic groups, and friends of Chatham history from all parts of the county. Continuing fundraising efforts, we are confident, will allow us to reach our goal.

The exhibits committee is currently reviewing the final drawings from Design Dimension. We have researched, written, illustrated with images and artifacts, received new images and artifacts, captioned, credited, fundraised, agreed, disagreed, compromised and we expect to birth in December. We appreciate your help in making that a reality.

Let us not forget we have the best real estate in the county for a historical museum. Thanks to the Board of Commissioners and citizens of the county for entrusting us with the space and the mission.

COURTHOUSE WORK IN PROGRESS

We received a lot of courthouse photographs for this issue of the CCHA Newsletter, so we thought the best use for many of them would be a montage showing the

work being done on and in the building and a couple of the folks responsible for the remarkable progress being made. We will have the courthouse back very soon!



Susan Little
Chair of the Exhibits Committee



Mike Cindric
Design Dimension, Inc.



The Old Floor Removed



New Interior Roof Rafters



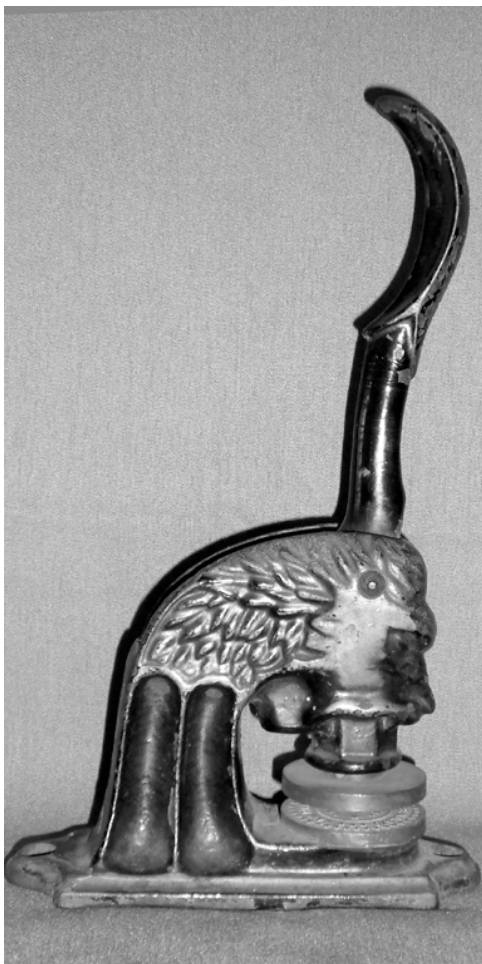
Work on the Courthouse Exterior Continues



We hope you liked this sampling of photographs of the rebirth of our courthouse. Another article herein suggests it should be ready for occupancy in December, and what a **GREAT** Christmas Present that will be for CCHA and all of Chatham County!

HAW RIVER FARMERS ALLIANCE EMBOSSER

Recently this embosser was given to us by Jay Farrell of Pittsboro. It came through him on behalf of some former Chatham citizens having left the area in the 1930s and now living out of state. The embosser will impress the words "*Haw River Farmers Alliance No. 370*" in the outer circle and "*Chatham County NC*" in the center. The Farmers Alliance was part of the Populist Movement in the late 1800s and early 1900s. This machine may have come from a rural cooperative selling farm supplies, represented a group of citizens formed into a community political unit, or signified the official mark of a political precinct or group. Research is being done. If you have any knowledge of where this might have been used as well as its purpose we would appreciate any input provided. Please respond to Barbara Pugh at BPugh1601@Gmail.com.



**Bring a Friend to
CCHA**

MEMBER PROVIDES PRINTS FOR MUSEUM FUNDRAISING



Mr. Harvey Gunter, a member of CCHA, has graciously donated prints from his original commissioned textile collage of Pittsboro by artist Elaine O'Neil. CCHA will sell prints and note cards to benefit the new Chatham History Museum. The colorful textile collage was created by Mrs. Elaine O'Neil of Elaine O'Neil Designs. Through whimsy and color, layers of colored fabric are stitched into place, slowly revealing an image that brings about a "sense of place" as described by Mrs. O'Neil. The scene of Pittsborough focuses on the Chatham County Courthouse is surrounded by historic homes, churches and buildings. CCHA will have prints and note cards available at the interim museum, 184

West Street in Pittsboro, Wednesday only, 12:00pm to 3:00pm. All prints are unframed. Mail or website orders will be accepted with additional costs for mailing. Checks should be made payable to "CCHA" for Chatham Historic Museum. Mail order to CCHA-Sales, PO Box 93, Pittsboro, N. C. 27312

	List	Member	
Item	Price	Price	Shipping
Note Cards	\$12.00	10.80	3.00
(six cards/envelopes)			
8x10 Print	\$20.00	18.00	3.00
16x20 Print	\$28.00	25.20	3.00
18x24 Print	\$32.00		3.00
Add - N. C. Sales Tax of 7.75%			

WAR OF 1812 200TH ANNIVERSARY PROGRAM PLANNED

Chatham County citizens two hundred years ago provided troops to this conflict with the British. Chatham has a special connection through Captain Johnston Blakeley, lost at sea with his sloop "*Wasp*". Our own Board Member, Robert Barnes, teaches history at Central Carolina Community College here at the Pittsboro campus and will be our lecturer. CCHA is very pleased to draw from our local resources in having Robert present this program for us. Come, learn, and enjoy. The program is scheduled for Sunday, 7 October 2012; location to be announced.



US SLOOP WASP

CEMETERY PROJECT PROGRESS

Beverly Wiggins, Cemetery Survey Coordinator

The CCHA Cemetery Project had another good year thanks to dedicated volunteers and helpful Chatham citizens. Four previously unreported sites have been added to our archives in recent months, the Minter-McLeod cemetery on Taylor's Chapel Road, Joseph John Williams cemetery on Gade Bryant Road, the Joab Johnson cemetery south of Alton King Road, and a site off Alston Chapel Road with no inscribed stones to identify the family. Several cemeteries located within the Briar Chapel development were visited and documented more completely than they had been previously.

A major project goal is to photograph all of the known sites and gravestones in the county since this is the only way to preserve forever the information they contain. As permanent as stone may seem, we find evidence of significant deterioration when we visit sites that were recorded some years ago. A number of volunteers have contributed photographs to our archives to help with this effort. Among our biggest contributors this past year was Julie King-McDaniel, having recently provided photographs for all of the graves in the Macedonia AME Zion cemetery as well as five family cemeteries. Julie has taken photos of hundreds of grave markers in the Gulf area for CCHA and continues to work on our behalf. We are indebted to her for her good work.

Tootie Houston also helped the effort in 2011 by contributing photos for all of the gravesites in Lystra Baptist Church. She is currently working on photos of the graves in Mt. Gilead Baptist. Thanks, Tootie, for joining the cemetery team!

Jane and Alan Mann, relative newcomers to Chatham County and to CCHA, have made a hobby of helping researchers from distant places find their Chatham County loved ones by photographing gravesites and supplying other family information. While they get most of their requests through FindaGrave.com, they have contributed hundreds of photos to the CCHA archive as well. We are pleased to be the beneficiaries of their efforts to help Chatham researchers.

The cemetery project has also benefited from the efforts of Glenn Lazarus, a new volunteer, braving thickets of brambles to get photos of the grave markers hidden within. Siler City surveyor, Rufus Johnson, continues to ask landowners with cemeteries on their properties to allow CCHA to visit and record them. His help has been invaluable. Numerous others have helped the cause by reporting sites and showing volunteers how to find them. In short, the good people of Chatham County are making the cemetery project a success. Thank you!

All of the information and photographs that CCHA obtains are made available through CemeteryCensus.com, which now displays more than 5800 photographs for Chatham County gravesites. CemeteryCensus.com is maintained and sponsored by Allen Dew, devoting many volunteer hours to checking and managing that website. Some people find the CemeteryCensus.com website from the link on CCHA's website, but many others find CCHA by finding CemeteryCensus.com first. Our thanks to Allen for the service he provides to CCHA and the many folks with Chatham ancestors who discover information about them through his site.

Also working behind the scenes is David Peterson, who keeps the official database of all things cemetery-related for CCHA. With almost 600 cemeteries, more than 30,000 burial records, and frequent additions and corrections to manage, we are fortunate to have the database in David's calm and capable care. Thank you, David!

Please help us with this project if you can. If you know of a cemetery and are not sure that we have it recorded, please contact me at 919-542-4478, or

CemeterySurvey@ChathamHistory.org. If you have access to a cemetery, volunteer to photograph it or to escort other volunteers to the site. Organize a group at your church to photograph the markers in your church cemetery. CCHA is here to help. This is a great way to help save Chatham County history!

PRESIDENT'S NOTE

HISTORY IS A DAILY EVENT

The rebirth of the fire-damaged Chatham courthouse is part of history being made on a daily basis. The creation of the new Chatham Museum inside the structure is also history being made. I am proud of CCHA members and community supporters in their dedication to make the new museum a reality.

Being able to bring classes of school children into the museum and courthouse for a glimpse into our county's history is the reward for our hard work. Today's school children represent much diversity and new growth of the area. Children from Chatham families with deep roots here and the children from families more recently putting down those roots all need to know and share the story making us who we are and unique. Those children have immediate and extended family members, some in the form of visitors or tourists, also needing to know our story.

The museum has been the main focus of CCHA since the fire. The program frequency, newsletters, website updates, and other areas of membership support have suffered as we have worked to design and fundraise for the new museum. We hope you forgive us for those shortcomings, but also expect you would want us to make the best museum possible.

Your financial support has been generous. Fundraising started in 2011 and many of you have donated; however, should you want to do donations for 2012, we will gladly accept them. Support services for the museum, printed materials, setting up the research, office, workspace, and storage areas in the courthouse are all tasks in the pipeline for us. We hope you will take this opportunity to volunteer and support in the way that is right for you, either with your time, your talents, or your money.

Barbara Clark Pugh
BPugh1601@Gmail.com

BOARD MEMBERS AND OFFICERS NAMED FOR CCHA

Members of CCHA approved Rob Barnes, Lee Sullivan, and Andy Wilkie to its Board of Directors. They join returning Directors Rae Bland, Kenneth Crabtree, Tommy Emerson, Walter Harris, and Kay Judge and. Barbara Pugh, President; Lee Sullivan, Vice President; Jane Hinnant, Secretary; Dan Perry, Treasurer; Fred Vatter, past-president; and Jane Pyle, curator.

BRING A FRIEND TO CCHA

CCHA Partial Calendar for 2012

Wednesdays Open Museum Day 12:00PM to 3:00PM
 First Sundays Open Museum Day 12:00PM to 3:00PM
 First Tuesdays History Sharing Group - Contact Kay Judge
 Sunday, 7 Oct War of 1812 200th Anniversary Program

**Always Remember to
 Bring a Friend to CCHA
 Both of you will be glad
 you did!**

2011 IN REVIEW - BY JANE PYLE

The Chatham Historical Museum continues at its temporary location on East Street, Pittsboro, using the conference room of Caldwell Banker Real Estate by special arrangements with Elizabeth Anderson. The museum is open Wednesday afternoons from noon to 3:00pm, on Pittsboro's First Sundays from April through October from 1:00pm to 4:00pm, and by reservation. Visitors find special displays, access to the CCHA website, and the organization publications. This year, over 150 visitors signed the guest register, most during the summer on Sunday afternoon.

Candace Burke continues to coordinate volunteer staff on a monthly schedule, and this year was pleased to add three new volunteers to her calling list: Lee Sullivan, Ruth Couch, and Anne Landin. Meanwhile, loyal workers Lois Harris, Michael McCormick, Patty Walters, and Charlie Thomas greet visitors, answer questions, and fill orders for the books, pamphlets, maps, DVDs and other CCHA merchandise for sale.

New acquisitions continue to arrive for the museum's artifact, photograph, and research collections. Wooden chicken coop, threshing cradle, and ironing board were donated by Helen Buckner; wool-spinning wheel given by Jean Vollrath; a large collection of carpenter's tools was donated by William O. Petty, along with a sign used to order ice for home iceboxes; a collection of over 800 funeral programs was given by Annie Burnette (now digitized and available for viewing at <http://DigitalNC.org/Exhibits/Chatham-County-Funeral-Programs>) were received from the Bray family, from Rachel Whitehead, Gwen Ellerby, and from Jean Vollrath.

Audio recordings of CCHA's programs (three of the Civil War series and one of a panel relating courthouse stories) join oral histories from members of the Burns fam-

ily, W. L. Griffin, and Thelma Burnette. Church histories were received from Chatham Church, St. Andrew's, and Mt. Zion. Books received included *Remembering New Hill, NC: Oral Histories* by Judy Tysmans; *Historic Sites Marked by North Carolina Society Colonial Dames XVII Century* (with a description of Martha's Chapel); *Pluck, Perseverance, and Paint: Apex, North Carolina: Beginnings to 1941* by Warren Lee Holleman and C.P. Holleman, Jr.; *Old Southern Apples* by Creighton Lee Calhoun, Jr. in honor of Edith Calhoun; *The Diary of Mary Elizabeth Auman*, by William Thomas Auman; *Biographical History of North Carolina* edited by Samuel Ashe and others; *Historical Atlas of the Haw River* by Mark Chilton (replacement copy for one damaged in the 2010 fire), and *History of the Haw River* by Ann Cassebaum. High School yearbooks from Moncure, Pittsboro, Bonlee, and Chatham Central High Schools were donated by Ly- anne Spangler; from Pittsboro High School by Erica Plummer; and a set of digitized collections of Goldston, Bonlee, and Bennett High School were given by Andy Wilkie and Larry Stevens.

A call for old photographs brought a number of interesting scenes and people to our photo collection from Jonus Nobles, Sims Poindexter, Jane Hinnant, Deborah Hearn, and Dianne Faucett. A sketch map of Goldston made by Sims Cheek [Poindexter] under direction of Cayce Lincoln Hilliard showing location of families and businesses in 1923 and a Post Office Department 1949 map of rural postal routes in Chatham County were added to the map collection. A color poster *Journeys Toward Freedom: African American History at NC State Historic Sites* was a gift from Michelle Lanier. Photographs and video footage related to the 2010 courthouse file were received from various sources.

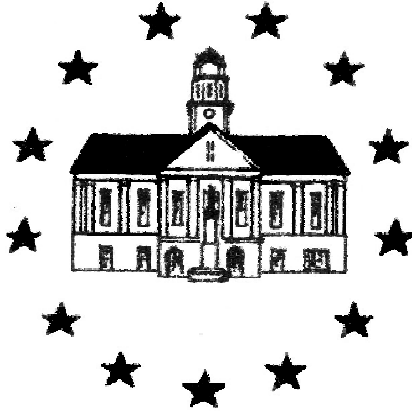
MANLY LAW OFFICE

Chatham Seekers Chapter of Questers International has completed its first restoration project with the restoration of windows in the Manly Law Office on Masonic Street in Pittsboro. The law office is owned by the Chatham County Historical Society. The Chatham Seekers, a group of 20 women interested in maintaining our history through appreciation of antiques and restoration, held fundraisers and managed to earn enough to hire a retired window specialist who only works on restoring historical buildings. Mr. Al Poland of Raleigh agreed to take on the job when he first saw the law office and agreed it was worth saving. After completing the first window the Chatham Seekers applied for grant money from their State Grants Committee and were fortunate to be selected to receive \$2000 to complete the project. Today the Manly Law Office proudly stands with all new historically correct windows just waiting for the next phase of the project that the Chatham Seekers Questers undertakes.

OLD MILITARY PHOTOS WANTED

In the new museum, the Military Salute to Valor exhibit will feature a digital collection of pictures of Chatham men and women having served in any branch of the service during any conflicts, wars, peacetime, or currently serving. They must have been a resident of Chatham County during their time of service. It is desirable the veteran/service member be dressed in military uniform. Branch of service, dates of service and rank (if known) are good to have for our records, but the only information on the video frame picture will be the name of the individual. Scans of the photos may be submitted via our website by using the address Salute@ChathamHistory.org. It is anticipated a date will be set for a scanning event in the fall, providing an opportunity to bring your photo to us for scanning.

**CHATHAM COUNTY HISTORICAL
ASSOCIATION, INC.**



CCHA Newsletter

Published by the Chatham County Historical Association, Inc.
Post Office Box 93, Pittsboro, NC 27312
Email: HISTORY@CHATHAMHISTORY.ORG
Web: [HTTP://CHATHAMHISTORY.ORG/](http://CHATHAMHISTORY.ORG/)

Published four times per year. Subscription is included with membership.

Copyright © 2012 - Chatham County Historical Association, Inc.

The opinions expressed herein are not necessarily those of the Chatham County Historical Association, Inc. Articles appearing in the CCHA Newsletter may be reprinted in whole or in part under fair use provided proper credit is given to the source. Submissions are always welcomed, along with accompanying photographs. Articles reprinted herein are done under the principals of fair use, with full and proper credit given to the source.

OFFICERS:

President: Barbara Pugh
Vice President: Lee Sullivan
Treasurer: Dan Perry
Secretary: Wincie Jane Johnson Hinnant

BOARD OF DIRECTORS:

Rob Barnes
Raeford Bland
Kenneth Crabtree
Tommy Emerson
Walter "Corkey" Harris
Kay Judge
Barbara Pugh
Lee Sullivan
Andy Wilkie

PAST PRESIDENT:

Fred J. Vatter

MUSEUM CURATOR:

Jane Pyle

CEMETARY SUEVEY COORDINATOR:

Beverly Wiggins

NEWSLETTER EDITOR:

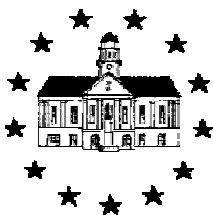
R.T.Crowley

MEMBERSHIP COORDINATOR:

Nancy Simons

**CHATHAM COUNTY HISTORICAL ASSOCIATION
POST OFFICE BOX 93
PITTSBORO, NC 27312**

**NONPROFIT ORG.
US POSTAGE PAID
PITTSBORO, NC
PERMIT NO. 19**



CCHA NEWSLETTER